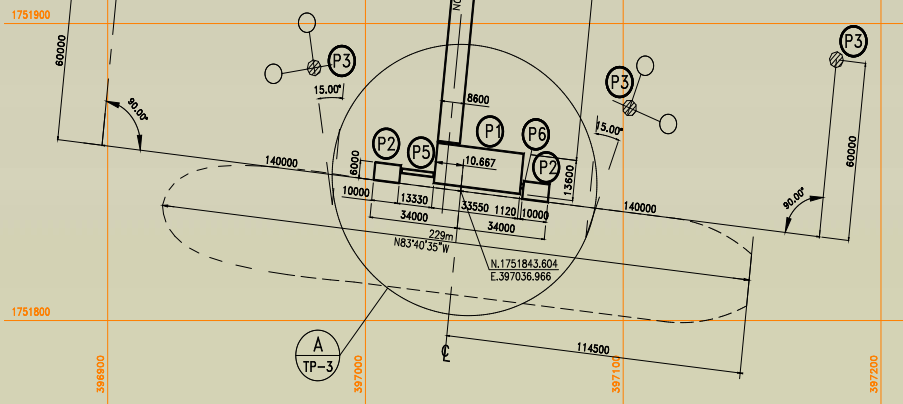
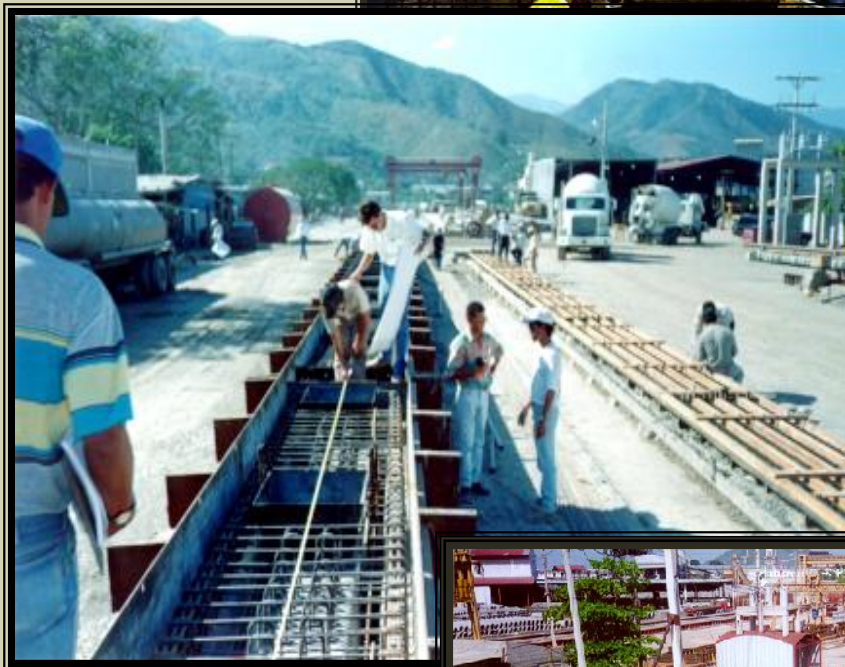




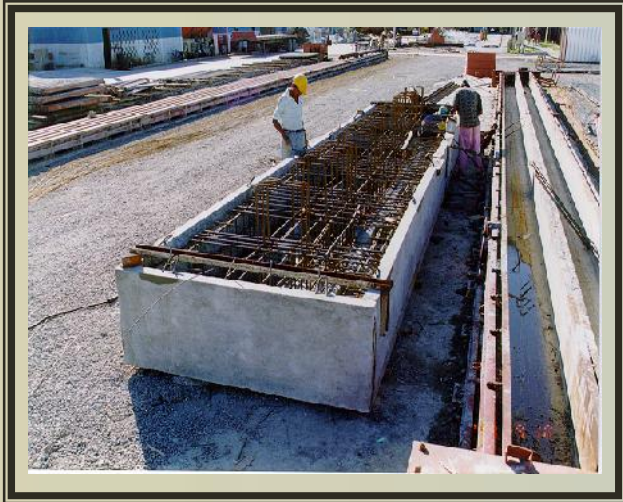
1752000

- (P1) Plataforma de Operaciones
- (P2) Dolphin de Atraque
- (P3) Dolphin de Amarre
- (P4) Puente Principal de Acceso
- (P5) Puente Peatonal 1
- (P6) Puente Peatonal 2



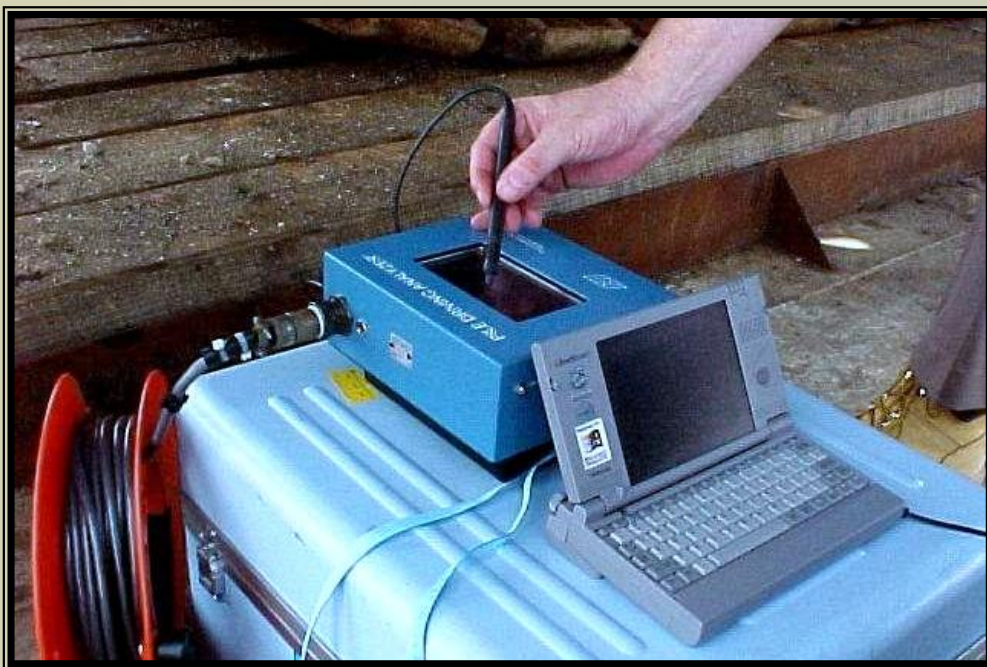


ESTRUCTURAS MARINAS





Equipo para obras
marinas y equipo de
Prueba dinámica de
hincado de pilotes



ESTRUCTURAS MARINAS



Transporte de Puente peatonal al sitio





Montaje de Elementos prefabricados
Plataforma de Operaciones Abajo:
Vista general de la Plataforma en
proceso de montaje







General Engineering Department

Texaco Inc.
P.O. Box 430
Bellaire, TX 77402 0430
4800 Fournace Place
Bellaire, TX 77401 2324
713 666 8000 tel
713 432 6255 or 6256 fax

August 3, 2001

Dr. Xavier Arguello-Carazo
Conhsa-Payhsa, S.A.
San Pedro Sula, Honduras C.A.

Dear Dr. Arguello:

On behalf of the General Engineering Department of Texaco, I want to express our sincere appreciation for the excellent work done on the new Texaco tanker dock at Puerto Cortes, Honduras.

We are very pleased to have found an engineering/construction resource as capable as Conhsa-Payhsa in Central America. As the dock approaches the anniversary of its first year of service it is apparent that we have together proven the merit of the decisions made to maximize Honduran content in the design and construction of the dock and support facilities.

As you are aware, there is viable potential for additional waterfront development in Puerto Cortes that will include Texaco along with other significant international companies. We are looking forward to the possibility of continuing this proven partnership in another successful project.

Sincerely,

A handwritten signature in black ink, appearing to read 'Michael J. Jones'.

Michael J. Jones P.E.
Project Manager

MJJ:

cc: Richard Ritter, Texaco Caribbean Inc.

PRO YECTO TERMINAL DE LIQUIDOS A
GRANEL REFINERIA TEXACO DE HONDURAS

